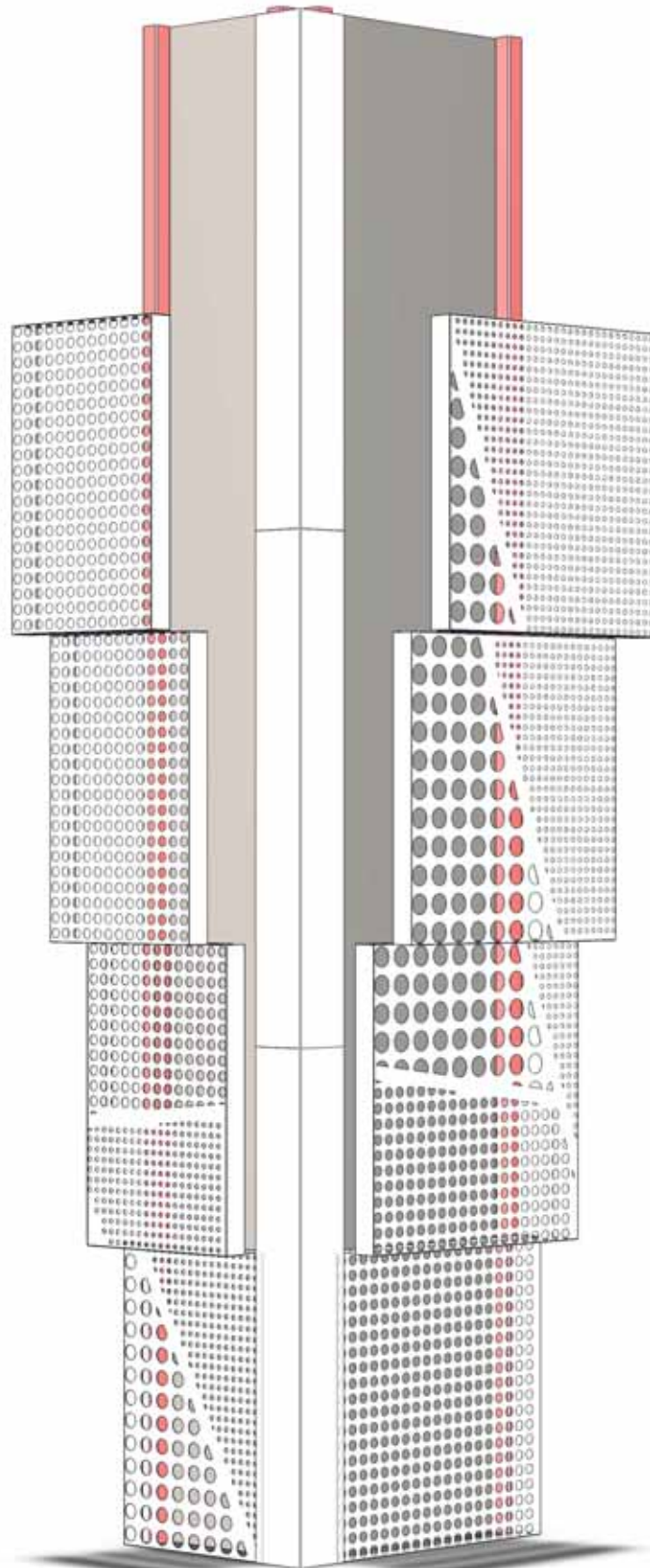


FACADE PANELS WALL PANEL

The facade panels has multiple dimension options. It can be used in outdoor - indoor walls and also in colons of the building. This system can be perforated with CNC machines so it has lot of options for design and dimensions.



Wall panel installation doesn't need a carrier system. The system needs a carcass of metal box profiles as the same dimensions with panels. It has multiple raw material selection like aluminium or galvanised. It is also possible to use expanded metal or a cnc design.

**WALL MESH
PANELS
WALL PANEL**

