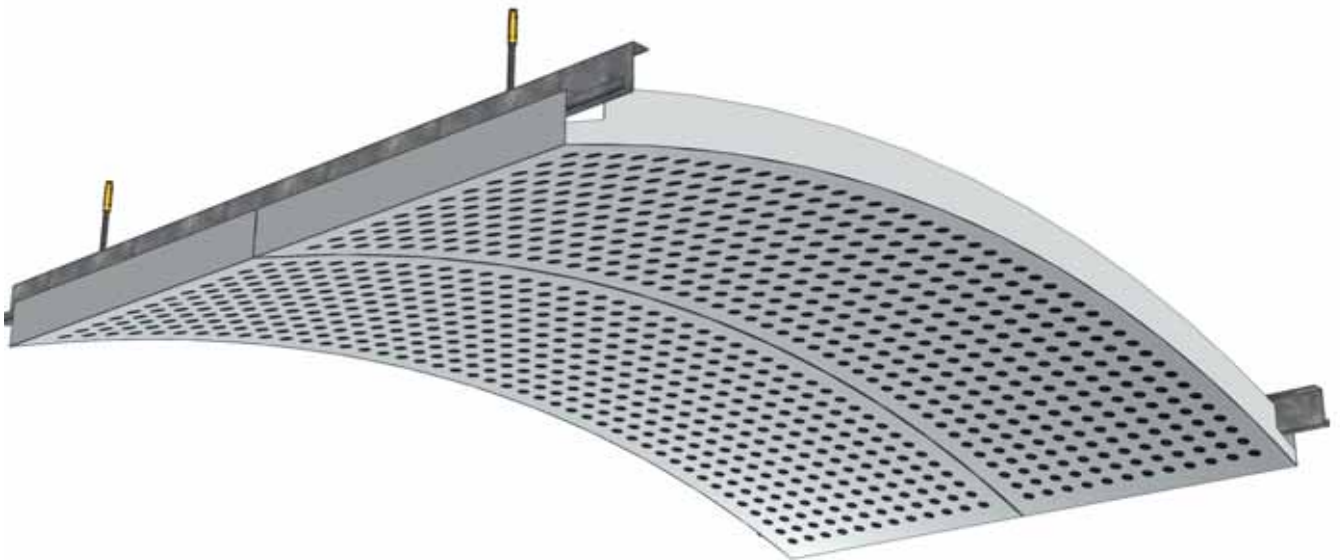
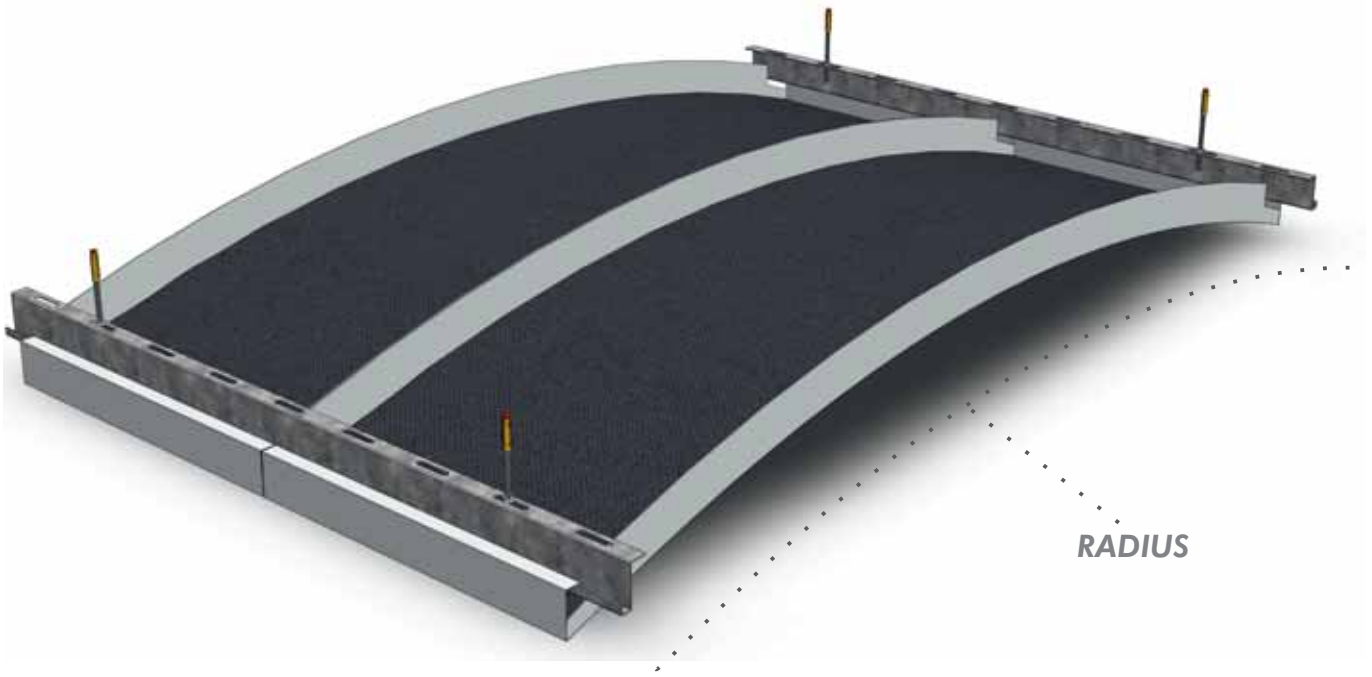


**CURVED PANEL
EXCLUSIVE**

In curved ceiling panels , radius length and installation depends on your project. This system, has two different raw material options, they are aluminium and galvanised also it's available to paint with RAL options. The system also can be produced with Hook-on carrier system.



RAW MATERIAL	THICKNESS	COLOR	PERFORATION
Steel	0,70 mm / 0,80 mm	Depends On Your Project	Depends On Your Project