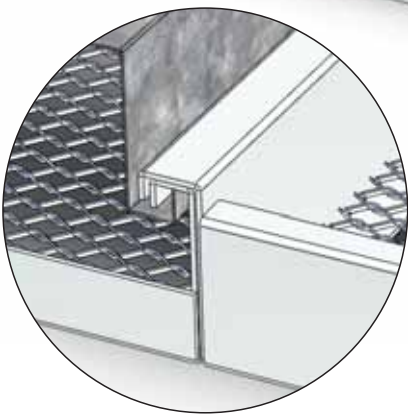
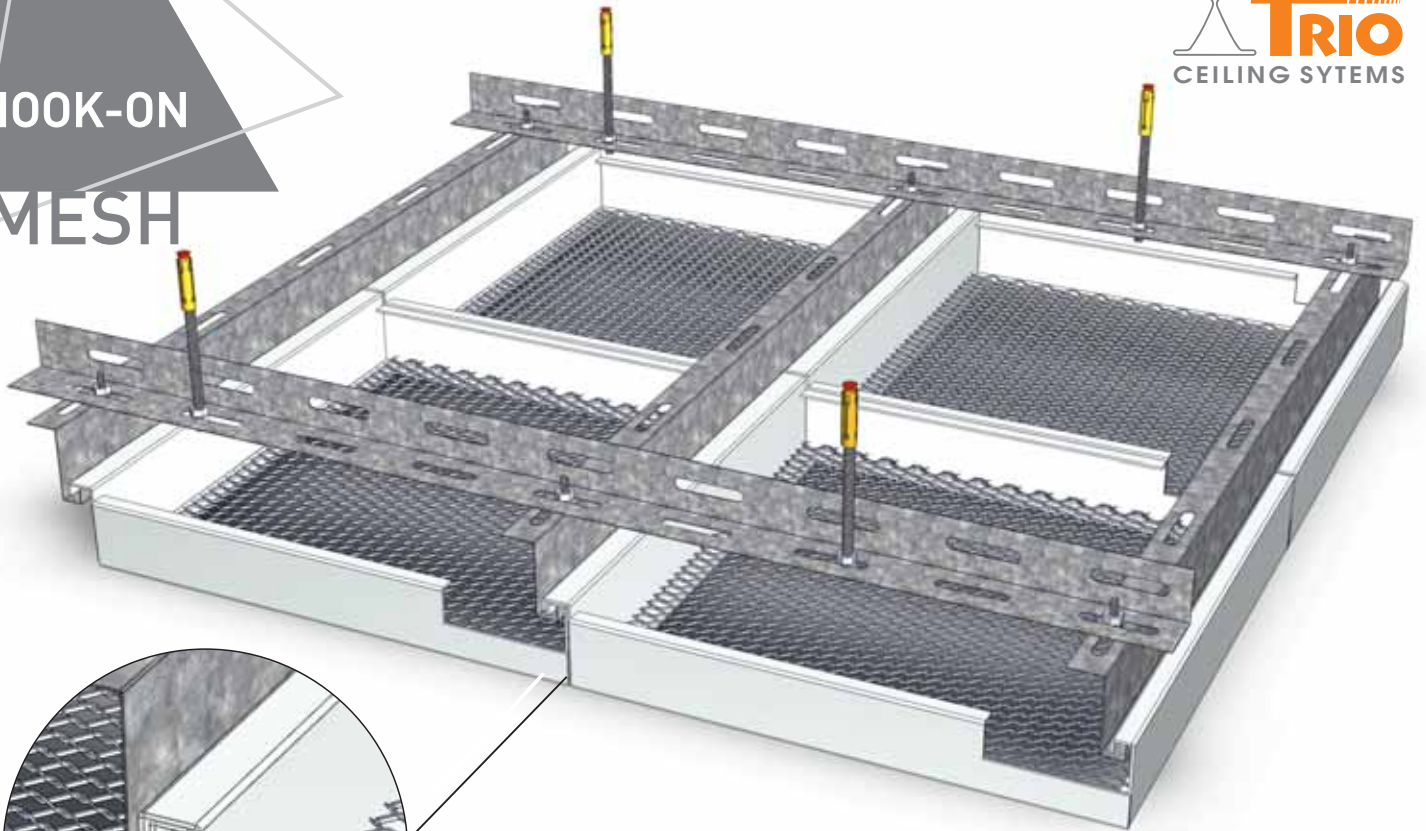


**HOOK-ON
MESH**



ACCESSORIES



HOOK-ON Z PROFILE



HOOK-ON L PROFILE



Z PROFILE ADDING



L PROFILE ADDING



SCREW + NUT



STEEL DOWEL



STEM BAR

RAW MATERIAL	THICKNESS	COLOR	MESH SIZE
Aluminium / Steel Metal	1,00mm / 2,00mm	Standart Ral 9005 - Ral 9016 - Ral 7016 Other Ral Options	Page 19-20

Lathed mesh is adapted with T-24 Carrier System. T Carrier System is a universal system and most common system in the world. It's easy to reach mechanical system of the building by pushing up the mesh panel. All RAL options can be used on the system and the standart dimensions are 60x60 – 60x120 – 120x120 mm.

LATHED MESH



ACCESSORIES



T SYSTEM 3,6 CM



T SYSTEM 1,20 CM



T SYSTEM 0,60 CM



DOUBLE SPRING TONG



STEEL DOWEL



HANGER WIRE

RAW MATERIAL	THICKNESS	COLOR	MESH SIZE
Aluminium / Steel Metal	1,00mm / 2,00mm	Standart Ral 9005 - Ral 9016 - Ral 7016 Other Ral Options	Page 19-20

WELDING TYPES MESH

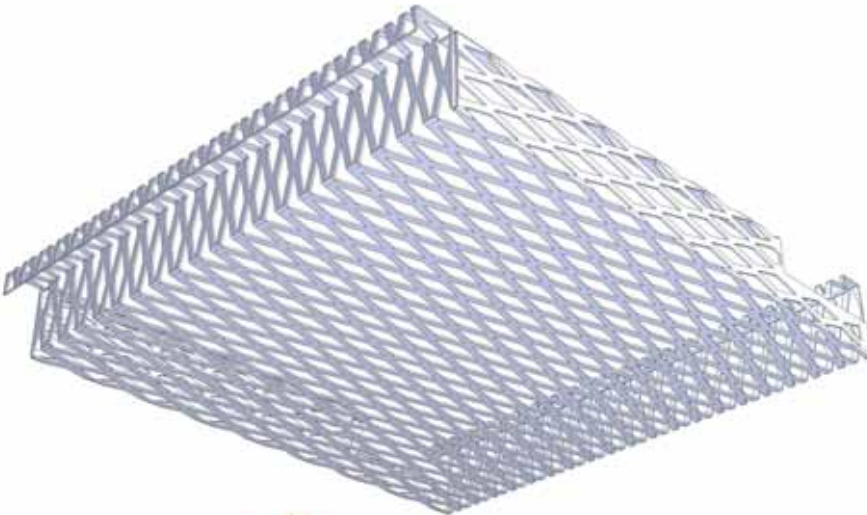
Hook-on System mesh panels has a lot of combinations. There are 7 different types of welding. You can choose mesh dimensions and all other mesh properties depending on your project. This product can be used as ceiling, wall, exterior areas.



TYPE-1 MESH ON



TYPE-2 MESH IN



TYPE -3 MESH FLATTENED

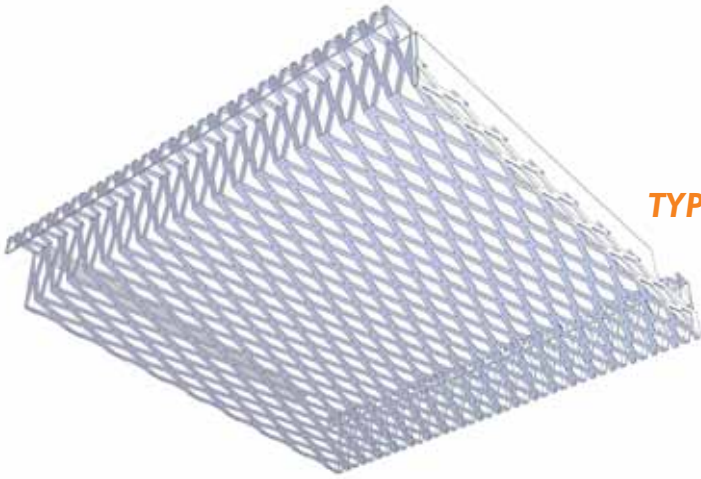


LIGHT DIRECTION



Mesh panel systems can be integrated to T Carrier , Hook-on , Clip-in system and many more carrier systems depends on your project. The light transmittance of your mesh panels can be organised by your architectural design.

**WELDING
TYPES
MESH**



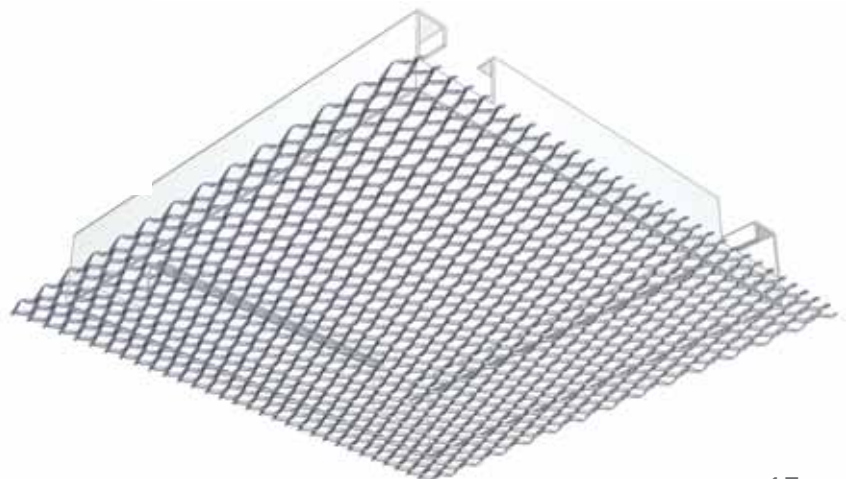
TYPE-4 MESH WITH SIDE BAR

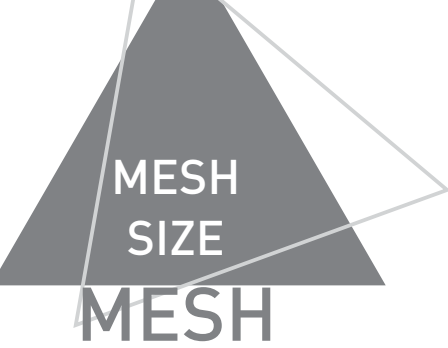
**TYPE-5 VERTICAL
(ONLY WIDE MESH DIMENSIONS)**



TYPE-6 LATHED

TYPE-7 VERTICAL (CHANNELED)

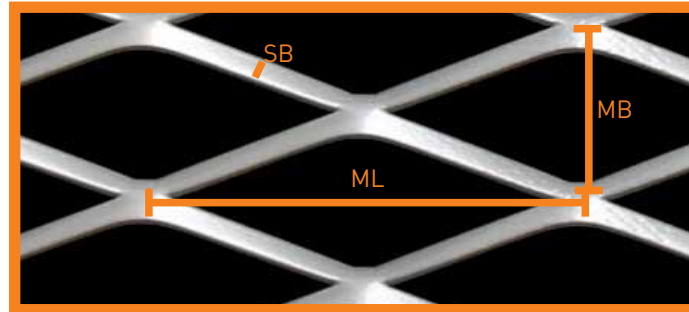




All visuals are scaled original size 1:1

ML: Mesh Length
 MB: Mesh Width
 SB: Strand Width

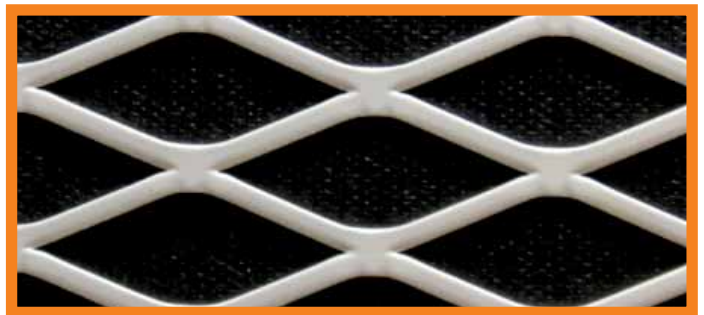
MESH



ML: 24 mm x MB: 60 mm x SB: 4 mm 1:1 Scale



20 mm x 50 mm x 4 mm 1:1 Scale



20 mm x 50 mm x 4 mm 1:1 Scale (Flattened)



20 mm x 40 mm x 3 mm 1:1 Scale



14 mm x 42 mm x 3 mm 1:1 Scale



10 mm x 30 mm x 2 mm 1:1 Scale



10 mm x 30 mm x 3 mm 1:1 Scale (Flattened)



8 mm x 16 mm x 2 mm 1:1 Scale



8 mm x 16 mm x 3 mm 1:1 Scale (Flattened)

MESH

All visuals are scaled original size 1:1



50 mm x 115 mm 10 mm 1:1 Scale



33 mm x 100 mm x 10 mm 1:1 Scale



35mm x 75 mm x 12 mm 1:1 Scale



25mm x 75 mm x 5 mm 1:1 Scale

EXCLUSIVE

Exclusive Ceilings...
We create and produce your render ...
Architectural details ...
Bespoke orders ...