

The cleanroom ceiling are produced with thick raw material. So its possible to walk on the system. To reach any other equipments on the background of the ceiling system. It's a moduler system and also solid walkable platform.

The panels , can be silconed to the carrier system so it can be used in hygienic areas.

ACCESSORIES



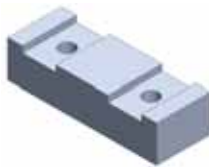
CARRIER PROFILE
2mm ALUMINIUM



PANEL SPLICE



CARRIER SPLICE ALUMINIUM CONNECTOR



CARRIER SPLICE



HANGER

RAW MATERIAL	SYSTEM	SIZE	PERFORATION
Aluminium / Steel Metal	1,50 mm	600x1200 mm	Plain